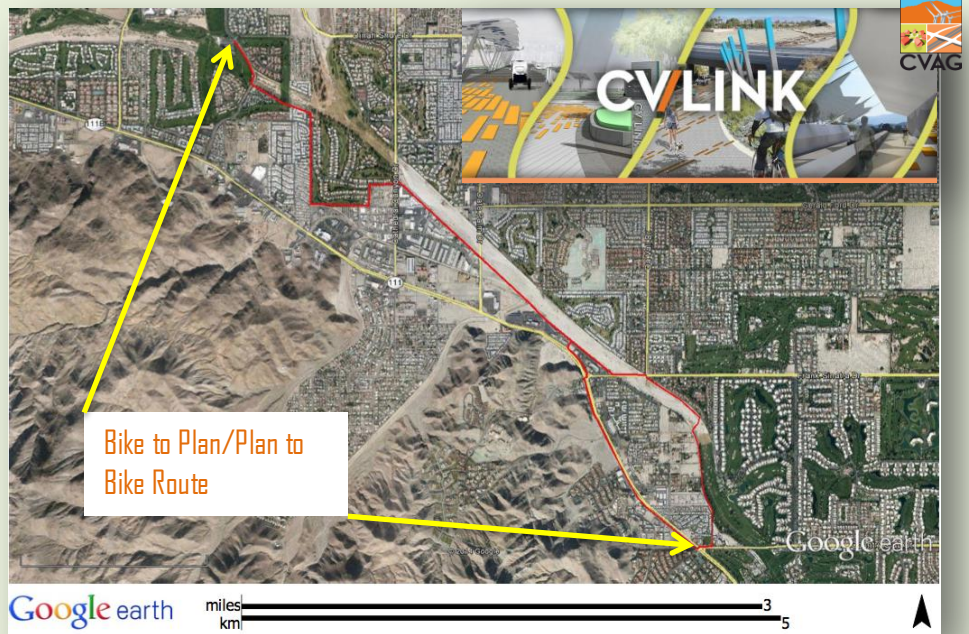


BIKE TO PLAN/ PLAN TO BIKE!

A fundraising event organized by the California Planning Roundtable and the American Planning Association Inland, Empire Section for the benefit of the California Planning Foundation's scholarship fund

Join an enthusiastic group of planners on a bike ride along a section of the future CVLink project. CVLink is envisioned as one of the largest multi-modal/active transportation trails in the nation. This event is designed to bring planners together to share a unique experience while supporting planning students. You will also have an opportunity to meet planners in the region, representatives from the local IES/APA Board and members of the California Planning Roundtable.



Saturday October 25, 2014

9 am to 12 pm

Meet at Tahquitz Creek Golf Course Clubhouse's entrance
[1885 Golf Club Dr., Palm Springs CA, 92264](http://www.tahquitzcreek.com)

REGISTRATION: \$25.00

All proceeds go directly to support planning student's scholarships

To register on-line please visit

<http://www.ies-apa.org/>

or pay on-site with a check payable to "CPF"

For more information contact:

Marvin Ross at mross@msaconsultinginc.com

Or Miguel A. Vazquez at (951)966-579 9

Snacks and Water Provided by
MSA Consulting

